

LIST OF EFFECTIVE SHEETS

Sheets listed below are effective as of the date shown on each sheet.

<u>Revision Number</u>	<u>Sheet</u>
3rd Revised	CS A*
Original	1
Original	2
Original	3
2 nd Revised	4
Original	5
Original	6
Original	7
Original	8
2 nd Revised	9
Original	10
Original	11
1 st Revised	12
Original	13
1st Revised	14*
Original	15
Original	16
Original	17
Original	18
Original	19

*New or revised Sheet.

(To be inserted by utility)

Advice Letter No. 491

Decision No. 23-01-004

Issued by

Cynthia A. Baker

NAME

President

TITLE

(To be inserted by Cal. P.U.C.)

Date Filed Jan 18, 2023

Effective Feb 1, 2023

Resolution No.

T A R I F F S C H E D U L E S

Applicable to

T E L E P H O N E S E R V I C E

of

Sierra Telephone Company, Inc., (U-1016-C)
(Name of Utility)

49150 Crane Valley Road (Road 426)
Post Office Box 219
Oakhurst, Madera County, California 93644
(Mailing Address)
(City or Town and County)

Operating In (or Near)

**Ahwahnee, Bass Lake, Coarsegold, Fish Camp, Mariposa, Oakhurst,
and Raymond Areas in Eastern Madera County and Mariposa County, California**
(City or Town and/or County)

These tariff schedules have been regularly filed with the Public Utilities Commission of the State of California and are the effective rates and rules of this Utility.

Service will be furnished in accordance with these tariff schedules and no officer, employee, or representative of the Utility has any authority to waive, alter, or amend these tariff schedules or any part thereof in any respect.

(To be inserted by utility)

Advice Letter No. 365

Decision No. 07-01-024

Issued by

Harry H. Baker

NAME

President

TITLE

(To be inserted by Cal. P.U.C.)

Date Filed May 29, 2008

Effective August 4, 2008

Resolution No. _____

A1. PRELIMINARY STATEMENT

1.1 GENERAL INFORMATION

1.1.1 TERRITORY SERVED BY THE COMPANY

Sierra Telephone Company, Inc. serves certain territory in Madera and Mariposa Counties, California, said territory being included within the boundaries of the Mariposa, Raymond and Coarsegold exchanges as defined on a map filed as part of the tariff schedules.

1.1.2 SERVICES FURNISHED

Exchange Service

The types and classes of service furnished are described in Schedule Cal. P.U.C. No. A2, Rule 2, Description of Service, and as may be further limited or amplified in the section of each rate schedule designated "Applicability."

1.1.3. PROCEDURE TO OBTAIN SERVICE

Services as described herein will be furnished to any individual, firm, or corporation in the Company's service area when an application is made as set forth in Schedule Cal. P.U.C. No. A2, Rule 3, Application for Service, and credit has been established or re-established as specified in Schedule Cal. P.U.C. No. A2, Rule 6, Establishments and Re-establishment of Credit. Where a pole line or buried wire extension is required or where the service is temporary or to a speculative project or in a real estate subdivision, the charge therefore and the conditions governing the installation will be in accordance with the appropriate schedule and Schedule Cal. P.U.C. No. A2, Rule 13, Temporary Service.

1.1.4 EMPLOYEE IDENTIFICATION REQUIREMENT

Each authorized Utility employee is issued an identification card in a distinctive format having a photograph of the employee. The employee is required to present the card upon requesting entry into any building or structure on the premises of an applicant or customer.

1.1.5 EXCHANGES SERVED

The names of the Company's exchanges, the type of central office equipment, operation, and hours of service are as follows:

<u>Exchange</u>	<u>Equipment</u>	<u>Operation</u>	<u>Hours of Service</u>	
			<u>Weekdays</u>	<u>Sunday & Holidays</u>
Raymond	Automatic	Dial	Continuous	
Coarsegold	Automatic	Dial	Continuous	
Mariposa	Automatic	Dial	Continuous	

(Continued)

(To be inserted by utility)

Advice Letter No. 365

Decision No. 07-01-024

Issued by

Harry H. Baker

NAME

President

TITLE

(To be inserted by Cal. P.U.C.)

Date Filed May 29, 2008

Effective August 4, 2008

Resolution No. _____

A1. PRELIMINARY STATEMENT

1.1.6 CUSTOMER SERVICE SELECTION GUIDE

See the Tariff Schedule listed below for detail of rates, terms and conditions, and description of services. These services can be added, changed, or canceled at any time by visiting a Sierra Telephone business office during regular business hours, or by calling the business office at 209-966-3636 or 559-683-4611 or Toll Free 877-658-4611. Services are presented using common terms and listed in alphabetical order. The names of the services are presented to aid in customer recognition and selection of services and may not be exactly the same name as the service names within the various schedules. Services are provided contingent on equipment capability and capacity.

	<u>Tariff Schedule*</u>
A. Residential Basic Access Line Service and Functional Equivalent	
Associated Non-Recurring Charges	A18
Associated Surcharges and Taxes as mandated by regulation or law	
California Advanced Services Fund Surcharge	A32
California High Cost Fund-A Surcharge	A32
California High Cost Fund-B Surcharge	A32
California Relay Service and Communication Devices Fund Surcharge	A31
California Teleconnect Fund Surcharge	A24
Emergency Telephone Users Surcharge (9-1-1 Tax)**	Not Tariffed
Federal Excise Tax***	Not Tariffed
Public Utilities Commission Reimbursement Fee	A34
Universal Lifeline Telephone Service Surcharge	A4

*For specific tariff sheets, please refer to the Table of Contents.

**Board of Equalization, Excise Tax Division, 1-800-400-7115, or P.O. Box 942879,
Sacramento, CA 94279-0056 or www.boe.ca.gov/sptaxprog/spprograms.htm

***Internal Revenue Service, Excise Tax Branch, 1111 Constitution Ave.,
Washington, D.C. 20224 or www.irs.gov and perform a publications search for publication
number 510.

(Continued)

(To be inserted by utility)

Advice Letter No. 365

Decision No. 07-01-024

Issued by

Harry H. Baker

NAME

President

TITLE

(To be inserted by Cal. P.U.C.)

Date Filed May 29, 2008

Effective August 4, 2008

Resolution No.

A1. PRELIMINARY STATEMENT

1.1.6 CUSTOMER SERVICE SELECTION GUIDE - Continued

	<u>Tariff Schedule*</u>	
A. Residential Basic Access Line Service and Functional Equivalent – Continued		
1-Party Primary Flat Rate Service**	A3	
1-Party Universal Lifeline Telephone Service**	A4	
2-Party*** Primary Flat Rate Service**	A3	
2-Party*** Universal Lifeline Telephone Service**	A4	
Integrated Services Digital Network (ISDN) Service - Basic Rate Interface (BRI)**; ****	A10	(T)
(An upgrade from 1-Party Primary Flat Rate Service)**		
Limited Service	A2, Rule 1	
Returned Check Charge	A2, Rule 9	

*For specific tariff sheets, please refer to the Table of Contents.

**Includes an alphabetical listing in the local telephone directory. A Federal Communications Commission (FCC) imposed Subscriber Line Charge (SLC) also applies. A Universal Lifeline Telephone Service (ULTS) customer is provided an allowance to cover any Subscriber Line Charge. The ISDN Basic Rate Interface (BRI) service is charged one (1) SLC charge at the residence and single line business rate. The SLC charge is located in National Exchange Carrier Association (NECA) Tariff FCC No. 5, Section 17.1.2. (For further SLC information, please see the FCC web site at www.fcc.gov under the Consumer and Government Affairs, click on Information for Consumers).

***Grandfathered/Frozen service effective October 27, 2010. See Schedule Cal. P.U.C. No. A2, General Regulations, 2.1.2.A.

****Grandfathered/Frozen service effective January 1, 2019. See Schedule Cal. P.U.C. No. A2, General Regulations, 2.1.2. (N)
(N)

(Continued)

(To be inserted by utility)

Advice Letter No. 457a

Decision No. _____

Issued by

Cynthia A. Huber

NAME

President

TITLE

(To be inserted by Cal. P.U.C.)

Date Filed Feb 13, 2019

Effective Mar 1, 2019

Resolution No. T-17648

A1. PRELIMINARY STATEMENT

1.1.6 CUSTOMER SERVICE SELECTION GUIDE - Continued

Tariff
Schedule*

B. Residential Optional Services and Features

Advanced Calling Service**	A25
Caller ID - Basic (Number Only)	
Calling Name/Number	
Call Return - (Automatic Recall)	
Call Trace	
Repeat Dialing (Automatic Call Back)	
Answering Service	A23

*For specific tariff sheets, please refer to the Table of Contents.

**These services require residential one-party primary flat rate service and when selected in packages may qualify for discounts (see Schedule Cal. P.U.C. No. A25, Custom Calling Service). The referenced schedule (A25) contains definitions of the advanced calling service features.

(Continued)

(To be inserted by utility)

Advice Letter No. 365

Decision No. 07-01-024

Issued by

Harry H. Baker

NAME

President

TITLE

(To be inserted by Cal. P.U.C.)

Date Filed May 29, 2008

Effective August 4, 2008

Resolution No. _____

A1. PRELIMINARY STATEMENT

1.1.6 CUSTOMER SERVICE SELECTION GUIDE - Continued

Tariff
Schedule*

B. Residential Optional Services and Features - Continued

Call Blocking (block 900 calls through Information Services)	A11
Custom Calling Service **	A25
Call Forwarding - Busy	
Call Forwarding - Busy and No Answer	
Call Forwarding - No Answer	
Call Forwarding - Remote Access***	
Call Forwarding - Variable (Customer Changeable)	
Call Waiting with Cancel Call Waiting	
Speed Dialing (Abbreviated): Eight-Code or Thirty-Code	
Capacity and Customer Changeable	
Three-Way Calling	
Directory Listings - additional (primary listing is free)	A16
Distinctive Ring	A25
Extra Copies of Bills and Toll Statements	A22

*For specific tariff sheets, please refer to the Table of Contents.

**These services require residential one party primary flat rate service and when selected in packages may qualify for discounts. The referenced schedule (A25) contains descriptions of the custom calling service features. Unless the custom calling feature notes that it is customer changeable there may be service charges associated with making changes to features. For example, the pre-set forward-to-number on most call forwarding features requires a service charge in order to make changes to the forward-to-number.

***Requires the Call Forwarding - Variable feature (see Schedule Cal. P.U.C. No. A25, Custom Calling Service).

(Continued)

(To be inserted by utility)

Advice Letter No. 365a

Decision No. 07-01-024

Issued by

Harry H. Baker

NAME

President

TITLE

(To be inserted by Cal. P.U.C.)

Date Filed May 29, 2008

Effective August 4, 2008

Resolution No. _____

A1. PRELIMINARY STATEMENT

1.1.6 CUSTOMER SERVICE SELECTION GUIDE - Continued

Tariff
Schedule *

B. Residential Optional Services and Features - Continued

Inside Wiring Maintenance Service	A30
Joint User Service	A16
Line Extension Charges and Service Connection Charges	A33
Long Distance Carrier Selection Charges (charges to change long distance carriers)	A36
Non-published Service	A16
Off-Premises Extension Service	A6
Products and Services for the Disabled	A31
Referral Service - Standard or Extended**	A17
Remote Call Forwarding	A20
Service Charges (associated non-recurring charges)	A18
Toll Restriction / Toll Denial	A25
Visit Charge	A28
Voice Mail Service	A8

*For specific tariff sheets, please refer to the Table of Contents.

**Automatic Announcement is provided when Standard Referral or Extended Referral Service is not ordered (see Schedule Cal. P.U.C. No. A17, Telephone Number Referral Service).

(Continued)

(To be inserted by utility)

Advice Letter No. 365a

Decision No. 07-01-024

Issued by

Harry H. Baker

NAME

President

TITLE

(To be inserted by Cal. P.U.C.)

Date Filed May 29, 2008

Effective August 4, 2008

Resolution No. _____

A1. PRELIMINARY STATEMENT

1.1.6 CUSTOMER SERVICE SELECTION GUIDE - Continued

Tariff
Schedule*

C. Business Basic Access Line Service and Functional Equivalent

Associated Non-Recurring Charges	A18
Associated Surcharges and Taxes as mandated by regulation or law	
California Advanced Services Fund Surcharge	A32
California High Cost Fund-A Surcharge	A32
California High Cost Fund-B Surcharge	A32
California Relay Service and Communication Devices Fund Surcharge	A31
California Teleconnect Fund Surcharge	A24
Emergency Telephone Users Surcharge (9-1-1 Tax)**	Not Tariffed
Federal Excise Tax***	Not Tariffed
Payphone Service Providers Enforcement Program Surcharge	A9
Public Policy Payphone Program Surcharge	A9
Public Utilities Commission Reimbursement Fee	A34
Universal Lifeline Telephone Service Surcharge	A4

*For specific tariff sheets, please refer to the Table of Contents.

**Board of Equalization, Excise Tax Division, 1-800-400-7115, or P.O. Box 942879,
Sacramento, CA 94279-0056 or www.boe.ca.gov/sptaxprog/spprograms.htm

***Internal Revenue Service, Excise Tax Branch, 1111 Constitution Ave.,
Washington, D.C. 20224 or www.irs.gov and perform a publications search for publication
number 510.

(Continued)

(To be inserted by utility)

Advice Letter No. 365

Decision No. 07-01-024

Issued by

Harry H. Baker

NAME

President

TITLE

(To be inserted by Cal. P.U.C.)

Date Filed May 29, 2008

Effective August 4, 2008

Resolution No. _____

A1. PRELIMINARY STATEMENT

1.1.6 CUSTOMER SERVICE SELECTION GUIDE - Continued

Tariff
Schedule*

C. Business Basic Access Line Service
and Functional Equivalent - Continued

1-Party Primary Flat Rate Service**	A3
2-Party*** Primary Flat Rate Service**	A3
Business Answering Line**	A3 & A23
Digital Centrex Service - Network Access Termination**	A7
Integrated Services Digital Network (ISDN) Service - Basic Rate Interface (BRI)****	
(An upgrade from 1-Party Primary Flat Rate Service)**	A10
Payphone Service - Public Access Line**	A9
Returned Check Charge	A2, Rule 9
Trunk Line Service**	A13

(T)

*For specific tariff sheets, please refer to the Table of Contents.

**Includes an alphabetical listing in the local telephone directory. A Federal Communications Commission (FCC) imposed Subscriber Line Charge (SLC) also applies. A Universal Lifeline Telephone Service (ULTS) customer is provided an allowance to cover any Subscriber Line Charge. The ISDN Basic Rate Interface (BRI) service is charged one (1) SLC charge at the residence and single line business rate. The SLC charge is located in National Exchange Carrier Association (NECA) Tariff FCC No. 5, Section 17.1.2. (For further SLC information, please see the FCC web site at www.fcc.gov under the Consumer and Government Affairs, click on Information for Consumers).

***Grandfathered/Frozen service effective October 27, 2010. See Schedule Cal. P.U.C. No. A2, General Regulations, 2.1.2.A.

****Grandfathered/Frozen service effective January 1, 2019. See Schedule Cal. P.U.C. No. A2, General Regulations, 2.1.2.

(N)

(N)

(Continued)

(To be inserted by utility)

Advice Letter No. 457a

Issued by

Cynthia A. Huber

NAME

(To be inserted by Cal. P.U.C.)

Date Filed Feb 13, 2019

Effective Mar 1, 2019

Decision No. _____

President

TITLE

Resolution No. T-17648

A1. PRELIMINARY STATEMENT

1.1.6 CUSTOMER SERVICE SELECTION GUIDE - Continued

Tariff
Schedule*

D. Business Optional Services and Features

Advanced Calling Service**

A25

Caller ID - Basic (Number Only)

Calling Name/Number

Call Return - (Automatic Recall)

Call Trace

Repeat Dialing (Automatic Call Back)

Answering Service

A23

*For specific tariff sheets, please refer to the Table of Contents.

**These services require business one-party primary flat rate service and when selected in packages may qualify for discounts (see Schedule Cal. P.U.C. No. A25, Custom Calling Service). The referenced schedule (A25) contains definitions of the advanced calling service features.

(Continued)

(To be inserted by utility)

Advice Letter No. 365a

Decision No. 07-01-024

Issued by

Harry H. Baker

NAME

President

TITLE

(To be inserted by Cal. P.U.C.)

Date Filed May 29, 2008

Effective August 4, 2008

Resolution No. _____

A1. PRELIMINARY STATEMENT

1.1.6 CUSTOMER SERVICE SELECTION GUIDE - Continued

Tariff
Schedule*

D. Business Optional Services and Features - Continued

Call Blocking (block 900 calls through information services)	A11
Coin Supervision Additive Service	A9
Custom Calling Service **	A25
Call Forwarding - Busy	
Call Forwarding - Busy and No Answer	
Call Forwarding - No Answer	
Call Forwarding - Remote Access***	
Call Forwarding - Variable (Customer Changeable)	
Call Waiting with Cancel Call Waiting	
Speed Dialing (Abbreviated): Eight-Code or Thirty-Code	
Capacity and Customer Changeable	
Three-Way Calling	
Direct Inward Dialing (DID) to PBX****	A13
Directory Listings - additional (primary listing is free)	A16
Distinctive Ring	A25
Extra Copies of Bills and Toll Statements	A22

*For specific tariff sheets, please refer to the Table of Contents.

**These services require business one-party primary flat rate service and when selected in packages may qualify for discounts. The referenced schedule (A25) contains descriptions of the advanced calling service features.

***Requires the Call Forwarding - Variable feature (see Schedule Cal. P.U.C. No. A25, Custom Calling Service).

****Requires DID Trunks and DID Station Numbers (see Schedule Cal. P.U.C. No. A13, Private Branch Exchange Truck Line Service).

(Continued)

(To be inserted by utility)

Advice Letter No. 365

Decision No. 07-01-024

Issued by

Harry H. Baker

NAME

President

TITLE

(To be inserted by Cal. P.U.C.)

Date Filed May 29, 2008

Effective August 4, 2008

Resolution No. _____

A1. PRELIMINARY STATEMENT

1.1.6 CUSTOMER SERVICE SELECTION GUIDE - Continued

Tariff
Schedule*

D. Business Optional Services and Features - Continued

High Capacity Voice / Data Services	B1	
Hunting Service	A3	
Inside Wiring Maintenance Service	A29	
Integrated Services Digital Network (ISDN) Service		
Basic Rate Interface - BRI (1 channel)**; ****	A10	(T)
Primary Rate Interface - PRI (23 channels)**	A12	
(Both are upgrades from 1-Party Primary Flat Rate Service)**		
Intrabuilding Network Cable	A14	
Intrastate Special Access Service (dedicated circuits)	B1	
Joint User Service	A16	
Long Distance Carrier Selection Charges		
(charges to change long distance carriers)	A36	
Line Extension and Service Connection Charges	A33	
Off-Premises Extension Service	A6	
Products and Services for the Disabled	A31	
Referral Service - Standard or Extended***	A17	
Remote Call Forwarding	A20	
Service Charges (associated non-recurring charges)	A18	
Telecommunications Service Priority (TSP)	B1, Rule 25	
Toll Restriction / Toll Denial	A25	
Visit Charge	A28	
Voice Mail Service	A8	

*For specific tariff sheets, please refer to the Table of Contents.

**Includes an alphabetical listing in the local telephone directory. A Federal Communications Commission (FCC) imposed Subscriber Line Charge (SLC) also applies. A Universal Lifeline Telephone Service (ULTS) customer is provided an allowance to cover any Subscriber Line Charge. The ISDN Basic Rate Interface (BRI) service is charged one (1) SLC charge at the residence and single line business rate. The SLC charge is located in National Exchange Carrier Association (NECA) Tariff FCC No. 5, Section 17.1.2. (For further SLC information, please see the FCC web site at www.fcc.gov under the Consumer and Government Affairs, click on Information for Consumers).

***Automatic Announcement is provided when Standard Referral or Extended Referral Service is not ordered (see Schedule Cal. P.U.C. No. A17, Telephone Number Referral Service).

****Grandfathered/Frozen service effective January 1, 2019. See Schedule Cal. P.U.C. No. A2, General Regulations, 2.1.2. (N)
(N)

(Continued)

(To be inserted by utility)

Advice Letter No. 457a

Issued by

Cynthia A. Huber

NAME

(To be inserted by Cal. P.U.C.)

Date Filed Feb 13, 2019

Effective Mar 1, 2019

Decision No.

President

TITLE

Resolution No. T-17648

A1. PRELIMINARY STATEMENT

1.1.7 SYMBOLS

The following symbols are applicable to all tariff schedules and rules of Sierra Telephone Company, Inc.:

- (C) To signify changed listing, rule, or condition which may affect rates or charges.
- (D) To signify discontinued material, including listing, rate, rule, or condition.
- (I) To signify increase.
- (L) To signify material relocated from or to another part of tariff schedules with no change in text, rate, rule, or condition.
- (N) To signify new material including listing, rate, rule or condition.
- (P) To signify material subject to change under a pending application or advice letter.
- (R) To signify reduction.
- (T) To signify change in wording of text but no change in rate, rule, or condition.

(Continued)

(To be inserted by utility)

Advice Letter No. 365

Decision No. 07-01-024

Issued by

Harry H. Baker

NAME

President

TITLE

(To be inserted by Cal. P.U.C.)

Date Filed May 29, 2008

Effective August 4, 2008

Resolution No. _____

A1. PRELIMINARY STATEMENT

1.1.8 CONVERSION MATRIX

<u>SCHEDULE NAME</u>	<u>FROM OLD TARIFF SCHEDULE</u>	<u>TO NEW RESTRUCTURED "A" TARIFF SCHEDULE</u>	
TABLE OF CONTENTS	Table of Contents	A.	
PRELIMINARY STATEMENT	Preliminary Statement	A1.	
GENERAL REGULATIONS (RULES)	Separate Tabs for Each Rule	A2.	
INDIVIDUAL LINE SERVICE	A-1	A3.	(T)
UNIVERSAL LIFELINE TELEPHONE SERVICE	A-2	A4.	
DIRECTORY ASSISTANCE SERVICE	A-3	A5.	
MILEAGE RATES	A-4	A6.	
DIGITAL CENTREX SERVICE	A-5	A7.	
VOICE MAIL SERVICE	A-6	A8.	
PUBLIC ACCESS LINE SERVICE	A-7	A9.	
INTEGRATED SERVICE DIGITAL NETWORK- BASIC RATE INTERFACE	A-8	A10.	
INFORMATION SERVICES CALL BLOCKING	A-9	A11.	
INTEGRATED SERVICE DIGITAL NETWORK- PRIMARY RATE INTERFACE	A-10	A12.	
PRIVATE BRANCH EXCHANGE TRUNK LINE SERVICE	A-11	A13.	
INTRABUILDING NETWORK CABLE	A-12	A14.	
TEMPORARY INTRALATA SERVICE BILLING SURCREDIT	A-13	A15.	
DIRECTORY LISTINGS & JOINT USER SERVICE	A-14	A16.	
TELEPHONE NUMBER REFERRAL SERVICE	A-15	A17.	
MULTI-ELEMENT SERVICE CHARGES	A-16	A18.	
MOVE AND CHANGE CHARGES	A-17	A19.	
REMOTE CALL FORWARDING SERVICE	A-18	A20.	
INTER EXCHANGE RECEIVING SERVICE	A-19	A21.	
EXTRA COPIES OF BILLS AND TOLL STATEMENTS	A-20	A22.	
TELEPHONE ANSWERING SERVICE	A-21	A23.	
CALIFORNIA TELECONNECT FUND SURCHARGE	A-22	A24.	
CUSTOM CALLING SERVICE	A-23	A25.	
UNIVERSAL LIFELINE TELEPHONE SERVICE SURCHARGE	A-24	A26.	
INTRALATA SERVICE BILLING SURCHARGE	A-25	A27.	
VISIT CHARGE	A-26	A28.	

(Continued)

(To be inserted by utility)

Advice Letter No. 491

Decision No. 23-01-004

Issued by

Cynthia A. Baker

NAME

President

TITLE

(To be inserted by Cal. P.U.C.)

Date Filed Jan 18, 2023

Effective Feb 1, 2023

Resolution No. _____

A1. PRELIMINARY STATEMENT

1.1.8 CONVERSION MATRIX - Continued

<u>SCHEDULE NAME</u>	<u>FROM OLD TARIFF SCHEDULE</u>	<u>TO NEW RESTRUCTURED "A" TARIFF SCHEDULE</u>
INSIDE WIRE MAINTENANCE SERVICE	A-27	A29.
CONNECTION OF CUSTOMER- PROVIDED TERMINAL EQUIPMENT	A-28	A30
PRODUCTS AND SERVICES FOR THE DISABLED	A-29	A31.
CALIFORNIA HIGH COST FUND SURCHARGES	A-30	A32.
LINE EXTENSION AND SERVICE		
CONNECTION CHARGES	A-31	A33.
SURCHARGE TO FUND PUBLIC UTILITIES		
COMMISSION REIMBURSEMENT FEE	A-32	A34.
SALE OF TERMINAL EQUIPMENT	A-33	A35.
CARRIER SELECTION PROCESS FOR		
EQUAL ACCESS	A-34	A36.
PROMOTIONAL CAMPAIGNS	A-35	A37.
EMERGENCY REPORTING SERVICE	A-36	A38.
MESSAGE TELECOMMUNICATIONS	B-1	A39.
WIDE AREA TELECOMMUNICATIONS	B-2	A40.
CLASSIFIED TELEPHONE DIRECTORY		
ADVERTISING SERVICE	D-1	A41.
INTRALATA LEASED LINE AND INTRASTATE		
SPECIAL ACCESS SERVICE	G-1	A42.
DEVIATIONS	X-1	A43.
DEVIATIONS	X-2	A44.

<u>SCHEDULE NAME</u>	<u>FROM OLD TARIFF SCHEDULE</u>	<u>TO NEW RESTRUCTURED "B" TARIFF SCHEDULE</u>
TABLE OF CONTENTS	N/A	B.
ACCESS SERVICE	B-3	B1.

(Continued)

(To be inserted by utility)

Advice Letter No. 365a

Decision No. 07-01-024

Issued by

Harry H. Baker

NAME

President

TITLE

(To be inserted by Cal. P.U.C.)

Date Filed May 29, 2008

Effective August 4, 2008

Resolution No. _____

A1. PRELIMINARY STATEMENT

1.1.9 MAP OF TERRITORY SERVED

(Continued)

(To be inserted by utility)

Advice Letter No. 365

Decision No. 07-01-024

Issued by

Harry H. Baker

NAME

President

TITLE

(To be inserted by Cal. P.U.C.)

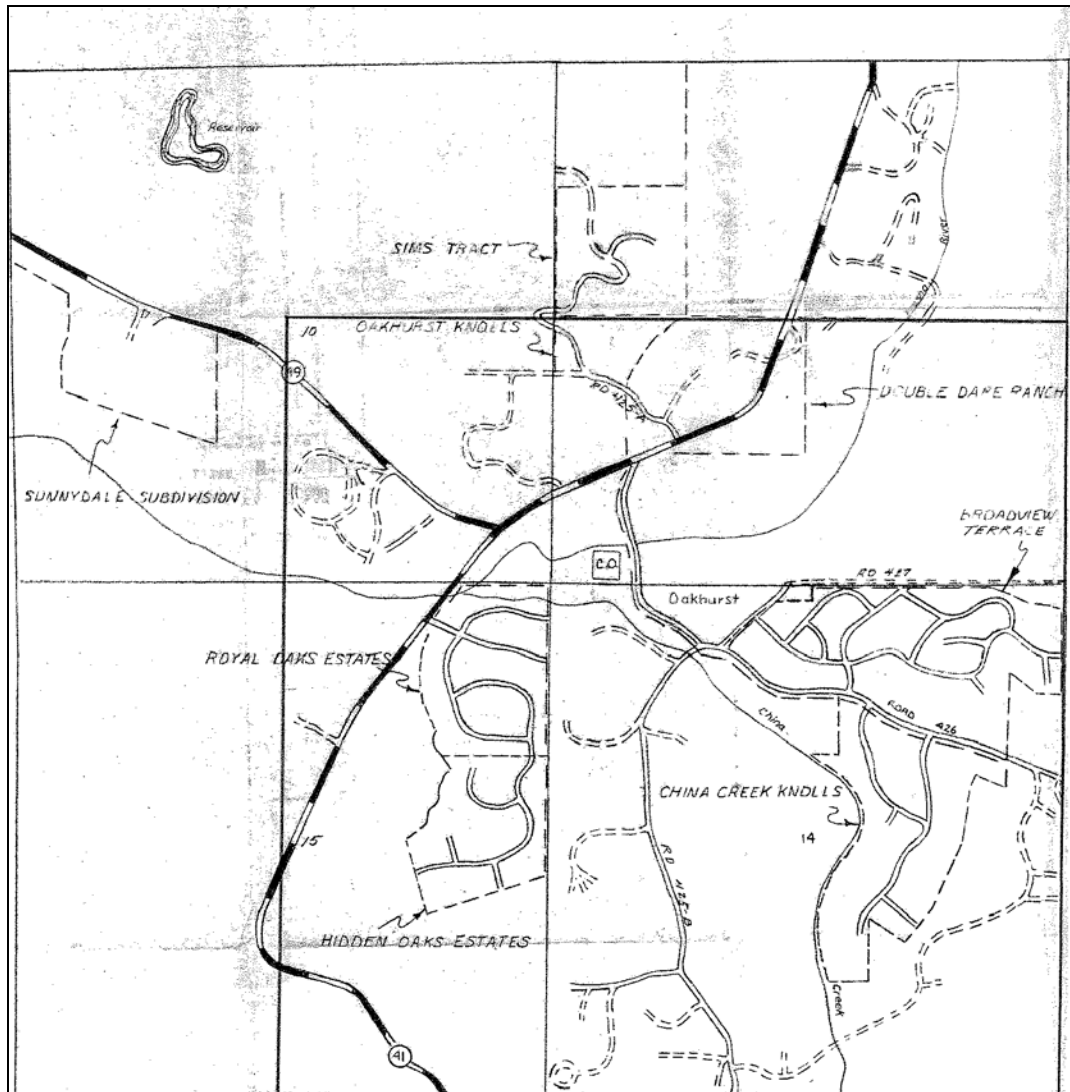
Date Filed May 29, 2008

Effective August 4, 2008

Resolution No.

A1. PRELIMINARY STATEMENT

1.1.10 MAP OF ZONE 1 - COARSEGOLD EXCHANGE



MAP OF ZONE 1 - COARSEGOLD EXCHANGE
NOTE: ALL BOUNDARIES ARE FULL SECTION LINES, HALF SECTION LINES
OR QUARTER SECTION LINES UNLESS OTHERWISE NOTED.
— ZONE BOUNDARY

(Continued)

(To be inserted by utility)

Advice Letter No. 365

Decision No. 07-01-024

Issued by

Harry H. Baker
NAME

President
TITLE

(To be inserted by Cal. P.U.C.)

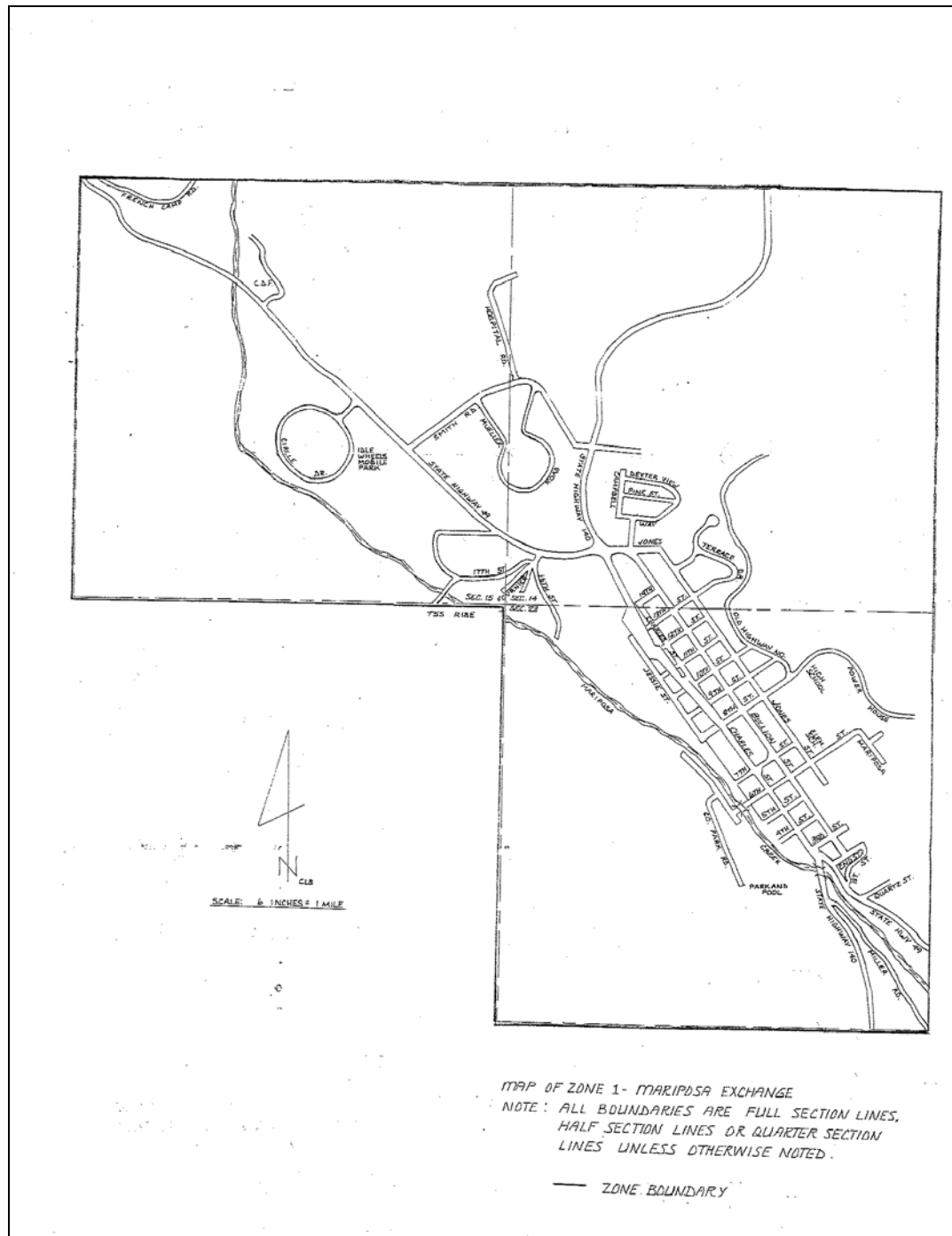
Date Filed May 29, 2008

Effective August 4, 2008

Resolution No.

A1. PRELIMINARY STATEMENT

1.1.11 MAP OF ZONE 1 - MARIPOSA EXCHANGE



(Continued)

(To be inserted by utility)

Advice Letter No. 365

Decision No. 07-01-024

Issued by

Harry H. Baker

NAME

President

TITLE

(To be inserted by Cal. P.U.C.)

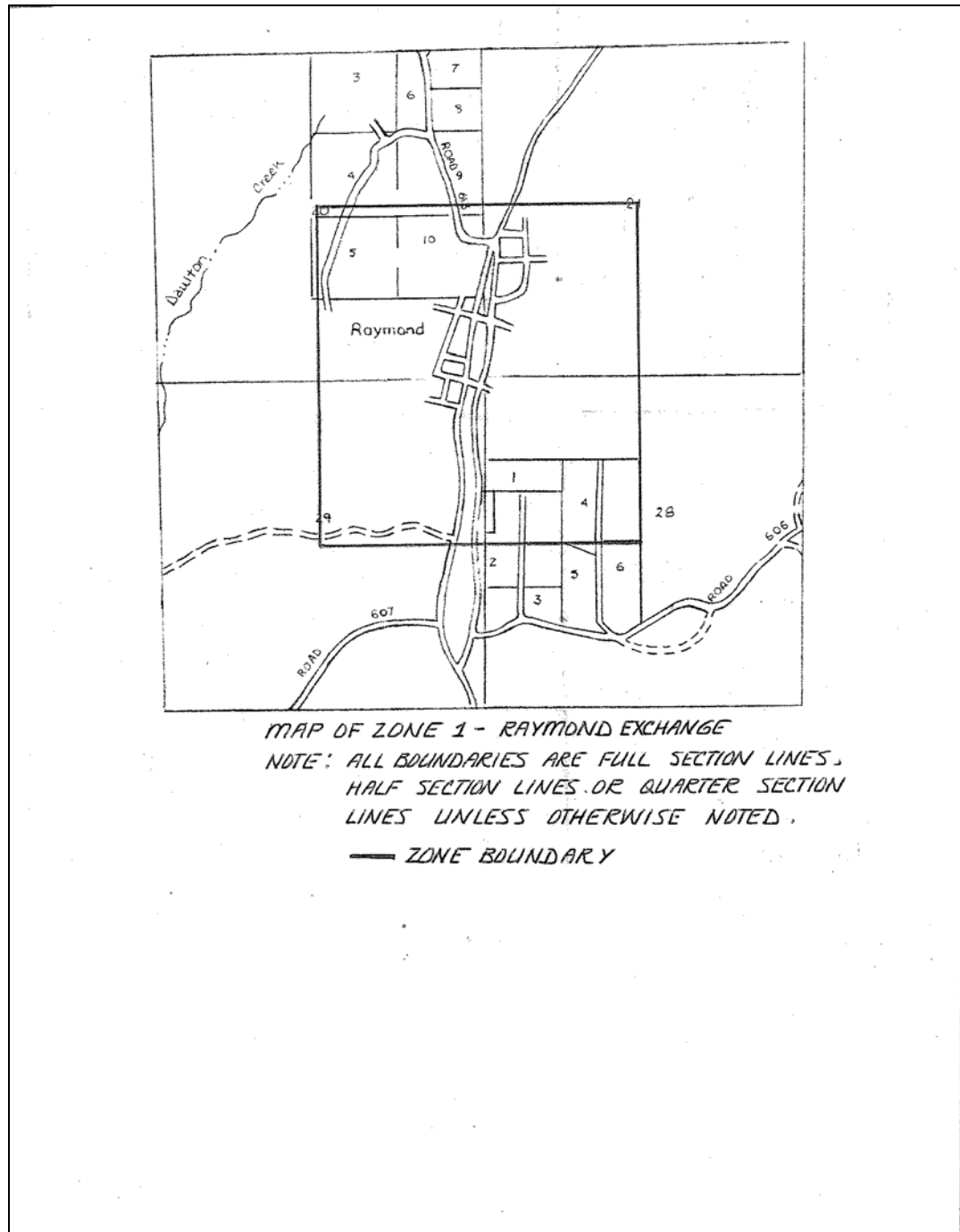
Date Filed May 29, 2008

Effective August 4, 2008

Resolution No.

A1. PRELIMINARY STATEMENT

1.1.12 MAP OF ZONE 1 - RAYMOND EXCHANGE



(To be inserted by utility)

Advice Letter No. 365

Decision No. 07-01-024

Issued by

Harry H. Baker

NAME

President

TITLE

(To be inserted by Cal. P.U.C.)

Date Filed May 29, 2008

Effective August 4, 2008

Resolution No.